

PRODUCT INFORMATION PACKET



Model No: 132563.00
Catalog No: 132563.00
1.50 HP Washdown Motor, 3 phase, 1200 RPM, 230/460 V, 182C Frame, TEFC
White Epoxy General Purpose Motors



Regal and Leeson are trademarks of Regal Beloit Corporation or one of its affiliated companies.
©2020 Regal Beloit Corporation, All Rights Reserved. MC017097E





Nameplate Specifications

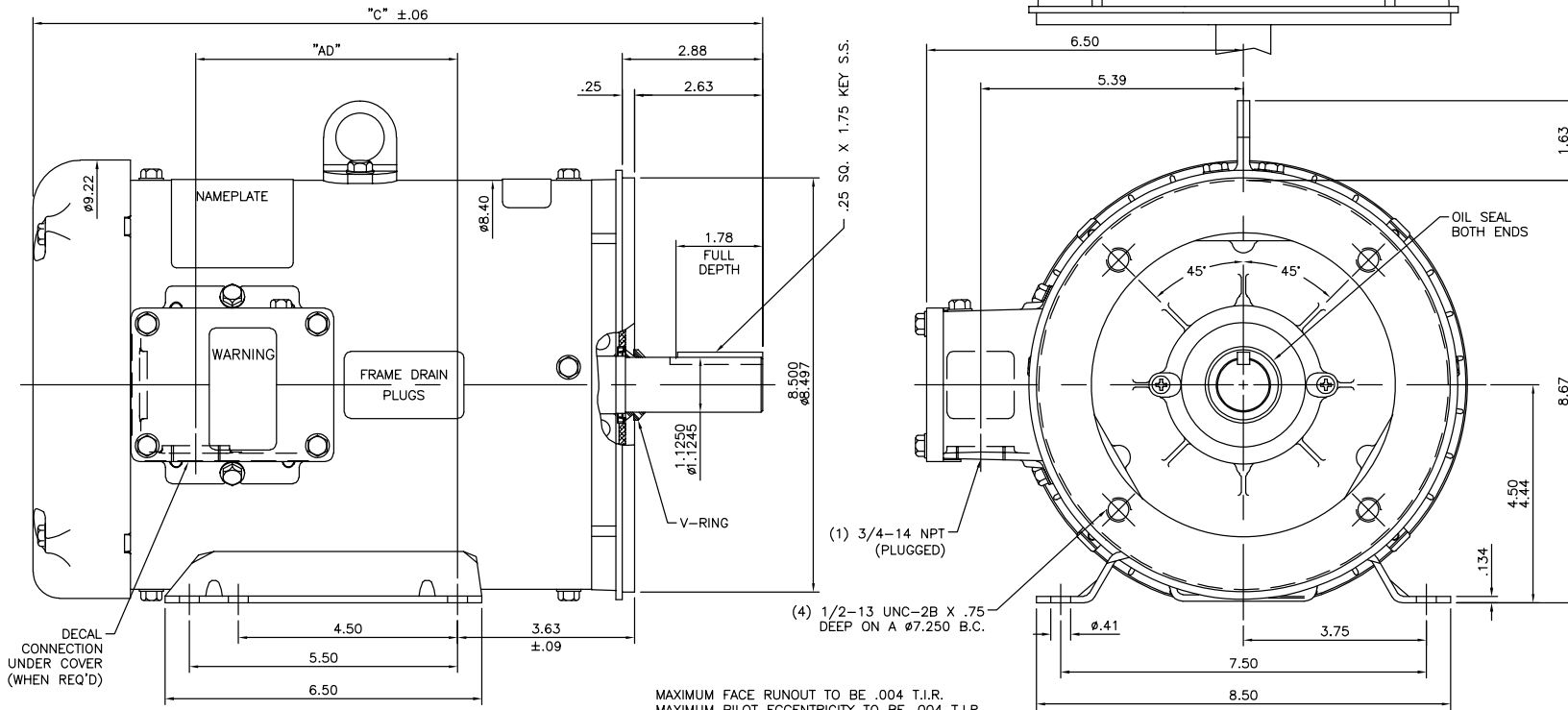
| | | | |
|------------------------|-------------------|----------------------------|-----------|
| Output HP | 1.50 Hp | Output KW | 1.12 kW |
| Frequency | 60 Hz | Voltage | 230/460 V |
| Current | 6.0/3.0 A | Speed | 1170 rpm |
| Service Factor | 1.15 | Phase | 3 |
| Efficiency | 87.5 % | Power Factor | 62 |
| Duty | CONTINUOUS | Insulation Class | F4 |
| Design Code | B | KVA Code | K |
| Frame | 182TC | Enclosure | TEFC |
| Thermal Protection | NOT | Ambient Temperature | 40 °C |
| Drive End Bearing Size | 6207 | Opp Drive End Bearing Size | 6205 |
| UL | Y-(LEESON UL REC) | CSA | Y |
| CE | Y | IP Code | 55 |

Technical Specifications

| | | | |
|-----------------------|-----------------------------|-----------------------|-----------------|
| Electrical Type | Squirrel Cage Induction Run | Starting Method | ACROSS THE LINE |
| Poles | 6 | Rotation | REV |
| Resistance Main | 0 Ohms | Mounting | RIGID |
| Motor Orientation | HORIZONTAL | Drive End Bearing | BALL |
| Opp Drive End Bearing | BALL | Frame Material | ROLLED STEEL |
| Shaft Type | T | Overall Length | 14.97 in |
| Frame Length | 9.5 in | Shaft Diameter | 1 1/8 in |
| Shaft Extension | 2.88 in | Assembly/Box Mounting | F1 ONLY |
| Connection Drawing | 005010.01 | Outline Drawing | 035622-950 |

This is an uncontrolled document once printed or downloaded and is subject to change without notice. Date Created:20/05/2020

035622



MAXIMUM FACE RUNOUT TO BE .004 T.I.R.
 MAXIMUM PILOT ECCENTRICITY TO BE .004 T.I.R.
 PERMISSIBLE SHAFT RUNOUT TO BE .002 T.I.R.

DECAL CONNECTION UNDER COVER (WHEN REQ'D)

- SPECIAL FEATURES:**
- 1) SHAFT SEALS & V-RING
 - 2) DRAIN HOLES IN FRAME & CONDUIT BOX
 - 3) STAINLESS STEEL SHAFT, HARDWARE & NAMEPLATE
 - 4) GASKETS THROUGHOUT

| DASH NO. | "C" | "AD" |
|----------|-------|------|
| 850 | 13.97 | 4.37 |
| 900 | 14.47 | 4.87 |
| 950 | 14.97 | 5.37 |
| 1000 | 15.47 | 5.87 |
| 1050 | 15.97 | 6.37 |
| 1100 | 16.47 | 6.87 |
| 1150 | 16.97 | 7.37 |

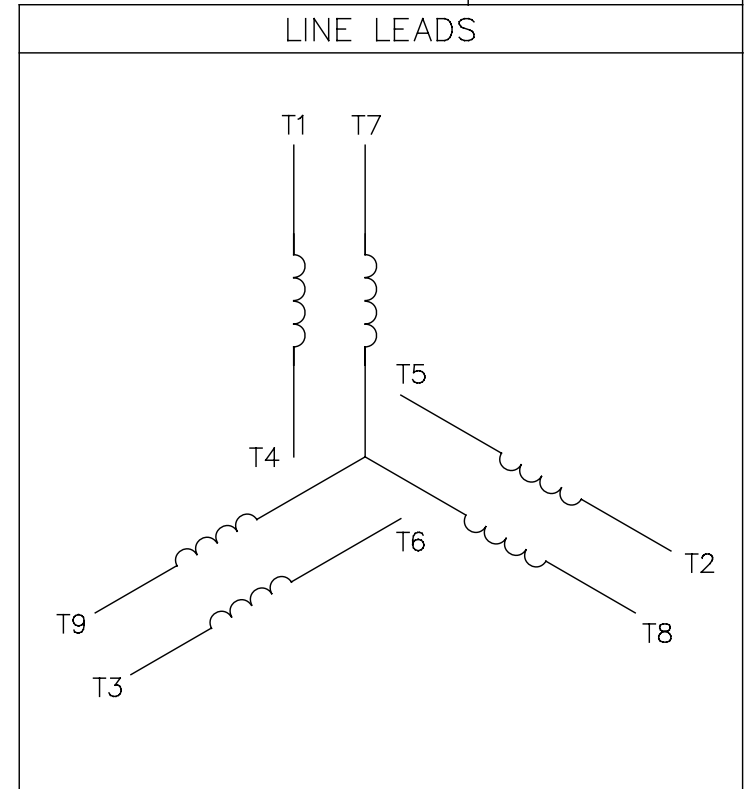
| TOLERANCES UNLESS SPECIFIED | | | | DRAWN | |
|--|----------|-----------|------|-------------|----------|
| DEC. | INCHES | XX | ± | YS | 01/29/08 |
| X | ±.1 | | | CHK | |
| .XX | ±.03 | | | APPD | |
| .XXX | ±.005 | | | SCALE | 1=2 |
| .XXXX | ±.0005 | | | REF | |
| .XXXXX | ±.00005 | | | FMF | |
| NO. | REVISION | BY & DATE | CHK | ANG | ±1/2' |
| THIS DRAWING IN DESIGN AND DETAIL IS OUR PROPERTY AND MUST NOT BE USED EXCEPT IN CONNECTION WITH OUR WORK ALL RIGHTS OF DESIGN AND INVENTION ARE RESERVED THIS IS AN ELECTRONICALLY GENERATED DOCUMENT - DO NOT SCALE THIS PRINT | | | | RFP | |
| CAD FILE | | 035622 | SIZE | DRAWING NO. | REV. |
| | | | B | 035622 | F |



TITLE OUTLINE - 180TC FRAME
 TEFC - RIGID "C"

005010-01

VIEW FROM OUTSIDE OF MOTOR AT SWITCH END.



| VOLTAGE | L1 | L2 | L3 | JOIN & INSULATE |
|---------|-------|-------|-------|-------------------------------|
| HIGH | T1 | T2 | T3 | (T4,T7) (T5,T8) (T6,T9) |
| LOW | T1,T7 | T2,T8 | T3,T9 | T4,T5,T6 |

| | | | | | | | | | | |
|--|-----------------------|--------------|-----|--------------------------------|----------|--|--|--------------------|-------------|------|
| | | | | TOLERANCES UNLESS SPECIFIED | | REGAL ™ Regal Beloit America, Inc. | | DRAWN RDW 04/12/02 | | |
| | | | | DEC. | INCHES | | | CHK | | |
| | | | | .X | ±.1 | | | APPD | | |
| | | | | .XX | ±.01 | | | SCALE 1=1 | | |
| | | | | .XXX | ±.005 | TITLE | | REF FIG.2-51 | | |
| A | UPDATED TO REGAL LOGO | SAJ 06/26/15 | AJY | .XXXX | ±.0005 | MAT'L. | | FMF | | |
| NO. | REVISION | BY & DATE | CHK | ANG | ±1/2" | FINISH | | PREV | | |
| THIS DRAWING IN DESIGN AND DETAIL IS OUR PROPERTY AND MUST NOT BE USED EXCEPT IN CONNECTION WITH OUR WORK ALL RIGHTS OF DESIGN AND INVENTION ARE RESERVED THIS IS AN ELECTRONICALLY GENERATED DOCUMENT - DO NOT SCALE THIS PRINT | | | | RFP | 04/12/02 | CAD FILE | | SIZE | DRAWING NO. | REV. |
| | | | | DIST | BRF-NLV | 00501001 | | A | 005010-01 | A |